



# ECH900/910

High resolution inkjet printer

PHARMAPACK



High resolution inkjet printer



# ECH900/910

## High resolution inkjet printer



Barcode Coding

- Print speed up to 120m/min (150DPI), 12.7mm or 25.4mm available for single print-head, High Quality with High Resolution and precise printing.
- Support Multiple system fonts: Windows font, Logo (BMP/PNG/JPEG), Barcode, 2D barcode.
- Huge Message/Job storage.
- Flexible message/job content editing.
- Minimum maintainance needed. Low total cost of ownership.
- Various Models/options available. Superior print capability.
- Support Multiple head seamless message Stitching capability.
- Simple operation and easy installation.



## CARTRIDGES

### ● EC001M(285)

Black color solvent-based, excellent adhesion and high resistance, longer decap time, better blackness and sharpness of graphics, and can dry extremely quickly on non-porous substrates

### ● EC001M(270)

Black color solvent-based, excellent adhesion and rub resistance, decap time>120mins, better blackness and sharpness of graphics, fast drying, can spray to longer distance

### ● EC001M(273)

Black color solvent-based, better adhesion and rub resistance, decap time >120mins, ultra-high blackness and sharpness of graphics, fast drying, suitable to wider range of working environment

### ● EC001M(274)

Green color solvent-based, excellent graphics sharpness, enhanced decap time, good fade resistance on non-porous substrates

### ● EC001M(275)

Cyan color solvent-based, excellent graphic sharpness, good adhesion and fade resistance on non-porous substrates.

### ● EC001M(276)

Blue color solvent-based, provides an eye-catching color, has excellent graphic sharpness and fast drying performance on non-porous substrates.

### ● EC001M(277)

Red color solvent-based, can be used immediately, has excellent graphic sharpness and fast drying performance on non-porous substrates

### ● EC001M(278)

Orange color solvent-based, can be used immediately, has excellent graphic sharpness and fast drying performance on non-porous substrates.

### ○ EC001M(271)

Orange color solvent-based, can be used immediately, has excellent graphic sharpness and fast drying performance on non-porous substrates.

### ● EC001M(990)

Black color solvent-based, excellent light resistance, water resistance, heat resistance, longer decap time, better blackness and sharpness of graphics, and can dry extremely quickly on non-porous substrates

### ● EC001M(799)

Blue solvent-based

### ● EC001M(324)

Yellow solvent-based

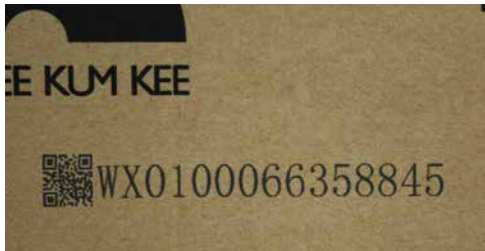
### ● EC002M(119)

Black color water-based, better blackness, longer decap time, suitable for porous substrates

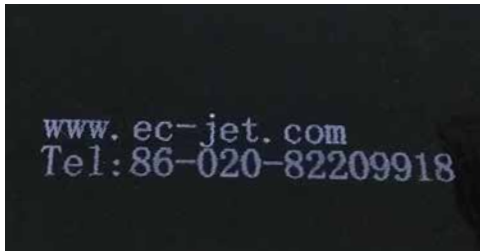
### ● EC002H

Black color water-based, suitable for porous substrates

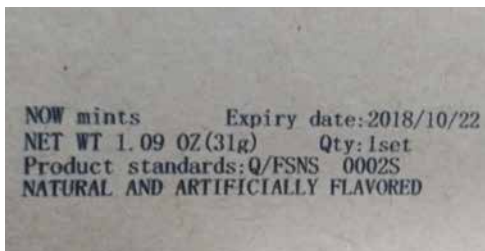
▲ The above are partial of our models and specifications



QR coding



name coding



dimension and parameter coding



other information coding



logo coding

# Excellent EC-JET, Intelligent Choice

| Model                    | ECH900   | ECH910                         |
|--------------------------|--|--------------------------------|
| Print Height             | 0-12.7mm、25.4mm、38.1mm、50.8mm  | 0-25.4mm、50.8mm、76.2mm、101.6mm |
| Lines of Print Supported | Multiple lines within printable area   |                                |
| Dynamic Data             | Communication, barcode/2D barcode, text  |                                |
| Printer Features         |  |                                |
| Print Speed              | 120M/min (150DPI)  |                                |
| Data Supported           | Text,Time,Date,Sequential Number,Logo,Barcode,2D barcode   |                                |
| Fonts Supported          | Windows font,Logo(BMP/PNG/JPEG),Barcode,2D barcode   |                                |
| Message Length           | 20inch.Extendable  |                                |
| Printer Memory           | 2GB  |                                |
| OS                       | Proprietary  |                                |
| External I/O             | Standard USB Host, remote communication, RS-232 communication                                    |                                |
| Physical Features        |  |                                |
| Environment              | 10~80%Temp.:10-40℃, Humidity:10-80%  |                                |
| EMI Compliance           | EN55011:2009+A1:2010,EN61326-1:2013,EN61000-3-2:2014,EN61000-3-3:2013                            |                                |
| Cartridge lifetime       | 42ml ink cartridges, about 385 thousand 12.7 mm characters                                       |                                |
| Printing Material        | Porous, Semi Porous, and Non Porous surface, like Face mask, wood, carton box, building material |                                |
| Power Supply             | 110V-240VAC,50/60Hz  |                                |
| Power Rating             | <60w   |                                |

\*Maximum print speed subjected to print resolution.

\*\*Please consult EC-JET for more information.



Continuous Ink-jet Printer



Large Character Ink-jet Printer



Laser Coding System



Thermal Transfer Printer



Consumable



## GUANGZHOU EC-PACK PACKAGING EQUIPMENT CO.,LTD.

Address:No.16 Huang Qi Shan Road,Yong He  
Economic Zone,GETDD,Guangzhou,China.  
Tel:+86-20-82209518 Fax:+86-20-82209511  
<http://www.ec-jet.com>  
E-mail:market@ec-jet.com

## Pharmapack Technologies Corporation

Address:No.16 Huang Qi Shan Road,Yong He  
Economic Zone,GETDD,Guangzhou,China.  
Tel:+86-20-82215907 Fax:+86-20-82213367  
<http://www.pppharmapack.com>  
E-mail:market@pppharmapack.com

## Pharmapack North America Corporation

Address:2860 East White Star Ave. Anaheim,  
CA 92806  
Tel:+1 909 390 1888  
Fax:+1 909 390 5388

## Pharmapack Europe S.R.L.

Address:Via Molino Rosso 10F  
40026 Imola(BO)Italy  
Tel:+39 0542 1890315  
Fax:+39 0542 1890314

## Pharmapack Technologies (India) Private Limited

Address:206,2nd Floor Srinivasa Tower  
Adjacent Hotel ITC Kakatiya,  
Hyderabad - 500016,Telangana